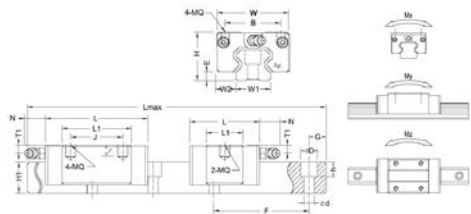




線性滑軌



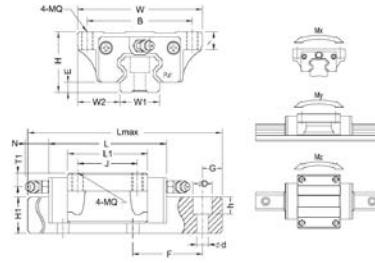
自潤式線性滑軌低組裝
(無法蘭、四孔、二孔)



型號	組合尺寸 mm				滑座尺寸 mm							滑軌尺寸 mm			
	H	W	W2	E	L	BxJ	MQxφ	L1	油孔	T1	(N)	W1	H1	F	dxDxh
BRC15U0	24	34	9.5	4.6	66	26x26	M4x5.6	40	Ø3	4.3	5	15	14	60	4.5x7.5x5.8
BRD15U0					56			21.6							
BRC15SU					47.6	26x-									
BRD15SU					37.6										
BRC20U0	28	42	11	5	77.8	32x32	M5x6.4	48.8	M6x1	5	15.6	20	18	60	6x9.5x9
BRD20U0					67.8			28							
BRC20SU					57	32x-									
BRD20SU					47										
BRC25U0	33	48	12.5	7	88	35x35	M6x8	57	M6x1	4.8	15.6	23	22	60	7x11x9.5
BRD25U0					78			31.5							
BRC25SU					62.5	35x-									
BRD25SU					52.5										
BRC30U0	42	60	16	9	109	40x40	M8x11.5	72	M6x1	7	15.6	28	26	80	9x14x12.5
BRD30U0					99			38.6							
BRC30SU					75.6	40x-									
BRD30SU					65.6										
BRD35U0	48	70	18	9.5	109	50x50	M8x11.2	80	M6x1	8	15.6	34	29	80	9x14x12.5
BRD35SU					74.7	50x-		45.7							
BRD45U0	60	86	20.5	14	138.2	60x60	M10x13	105	M8x1	8.5	16	45	38	105	14x20x17.5

型號	參考資料(mm)		基本荷重(Kgf)		容許靜力矩(Kgf*m)			重量	
	Lmax	G	動額定負荷 (C)	靜額定負荷 (CO)	Mx	My	Mz	滑塊(Kg)	滑軌(kg/m)
BRC15U0	4000	20	850	1350	10.1	6.8	6.8	0.17	1.4
BRD15U0			520	680	5.1	1.8	1.8	0.1	
BRC15SU			1400	2400	24	14.6	14.6	0.26	
BRD15SU					950	1400	7	4.9	
BRC20U0	4000	20	1950	3200	36.8	22.8	22.8	0.38	3.6
BRD20U0			1250	1750	17.5	6.9	6.9	0.21	
BRC20SU			2850	4800	67.2	43.2	43.2	0.81	
BRD20SU					1750	2400	33.6	11.6	
BRC25U0	4000	20	3850	6200	105.4	62	62	1.2	7.2
BRD25U0			2500	3650	62.1	20.9	20.9	0.8	
BRC25SU			6500	10500	236.3	137.8	137.8	2.1	
BRD25SU					6500	10500	236.3	137.8	

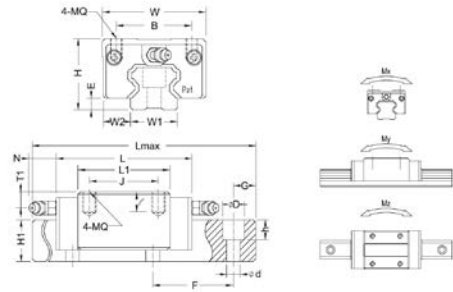
自潤式線性滑軌高組裝
(法蘭型、加長型)



型號	組合尺寸 mm				滑座尺寸 mm							滑軌尺寸 mm			
	H	W	W2	E	L	BxJ	MQxℓ	L1	油孔	T1	(N)	W1	H1	F	dxDxh
BRC15A BRD15A	24	47	16	4.6	66	38x30	M5x8	40	Ø3	4.3	5	15	14	60	4.5x7.5x5.8
56															
BRC25A BRD25A	30	63	21.5	5	77.8	53x40	M6x9	48.8	M6x1	7	15.6	20	18	60	6x9.5x9
67.8															
92.4															
82.4															
BRC25A BRD25A	36	70	23.5	7	88	57x45	M8x12	57	M6x1	7.8	15.6	23	22	60	7x11x9.5
78															
110.1															
100.1															
BRC30A BRD30A	42	90	31	9	109	72x52	M10x12	72	M6x1	7	15.6	28	26	80	9x14x12.5
99															
131.3															
121.3															
BRD35A0 BRD35LA	48	100	33	9.5	109	82x62	M10x13	80	M6x1	8	15.6	34	29	80	9x14x12.5
134.8					105.8										
BRD45A0 BRD45LA	60	120	37.5	14	138.2	100x80	M12x15	105	M8x1	8.5	16	45	38	105	14x20x17.5
163					129.8										

型號	參考資料(mm)		基本荷重(Kgf)		容許靜力矩(Kgf*m)			重量	
	Lmax	G	動額定負荷 (C)	靜額定負荷 (C0)	Mx	My	Mz	滑塊(Kg)	滑軌(kg/m)
BRC15A BRD15A	4000	20	850	1350	10.1	6.8	6.8	0.21	1.4
BRC25A BRD25A									
BRC25A BRD25A	4000	20	1400	2400	24	14.6	14.6	0.4	2.6
BRC25A BRD25A									
BRC25A BRD25A									
BRC25A BRD25A									
BRC25A BRD25A	4000	20	1950	3200	36.8	22.8	22.8	0.57	3.6
BRC25A BRD25A									
BRC25A BRD25A									
BRC25A BRD25A									
BRC30A BRD30A	4000	20	2850	4800	67.2	43.2	43.2	1.1	5.2
BRC30A BRD30A									
BRC30A BRD30A	4000	20	3600	6400	89.6	75.4	75.4	1.4	7.2
BRC30A BRD30A									
BRD35A0 BRD35LA	4000	20	3850	6200	105.4	62	62	1.6	7.2
BRD35A0 BRD35LA									
BRD45A0 BRD45LA	4000	22.5	6500	10500	236.3	137.8	137.8	2.7	12.3
BRD45A0 BRD45LA									
BRD45A0 BRD45LA	4000	22.5	7700	13000	292.5	210.9	210.9	3.6	12.3
BRD45A0 BRD45LA									

自潤式線性滑軌高組裝
(無法蘭型、加長型)



型號	組合尺寸 mm				滑座尺寸 mm							滑軌尺寸 mm			
	H	W	W2	E	L	BxJ	MQxℓ	L1	油孔	T1	(N)	W1	H1	F	dxDxh
BRC15R0	28	34	9.5	4.6	66	26x26	M4x6	40	Ø3	8.3	5	15	14	60	4.5x7.5x5.8
BRD15R0					56										
BRC20R0	30	44	12	5	77.8	32x56	M5x8	48.8	M6x1	7	15.6	20	18	60	6x9.5x9
BRD20R0					67.8										
BRC20LR					92.4	32x50									
BRD20LR					82.4										
BRC25R0	40	48	12.5	7	88	35x35	M6x10	57	M6x1	11.8	15.6	23	22	60	7x11x9.5
BRD25R0					78										
BRC25LR					110.1	35x50									
BRD25LR					100.1										
BRC30R0					109			40x40							
BRD30R0	99														
BRC30LR	131.3	40x60	94.3												
BRD30LR	121.3														
BRD35R0	55	70	18	9.5	109	50x50	M8x13	80	M6x1	15	15.6	34	29	80	9x14x12.5
BRD35LR					134.8	50x72		105.8							
BRD45R0	70	86	20.5	14	138.2	60x60	M10x16.5	105	M8x1	18.5	16	45	38	105	14x20x17.5
BRD45LR					163	60x80		129.8							

型號	參考資料(mm)		基本荷重(Kgf)		容許靜力矩(Kgf*m)			重量	
	Lmax	G	動額定負荷 (C)	靜額定負荷 (C0)	Mx	My	Mz	滑塊(Kg)	滑軌(kg/m)
BRC15R0	4000	20	850	1350	10.1	6.8	6.8	0.19	1.4
BRD15R0									
BRC20R0	4000	20	1400	2400	24	14.6	14.6	0.31	2.6
BRD20R0									
BRC20LR			1650	3000	30	23.8	23.8	0.47	
BRD20LR									
BRC25R0	4000	20	1950	3200	36.8	22.8	22.8	0.45	3.6
BRD25R0									
BRC25LR			2600	4600	52.9	45.5	45.5	0.56	
BRD25LR									
BRC30R0	4000	20	2850	4800	67.2	43.2	43.2	0.91	5.2
BRD30R0									
BRC30LR			3600	6400	89.6	75.4	75.4	1.2	
BRD30LR									
BRD35R0	4000	20	3850	6200	105.4	62	62	1.5	7.2
BRD35LR									
BRD45R0	4000	22.5	6500	10500	236.3	137.8	137.8	2.3	
BRD45LR									
			7700	13000	292.5	210.9	210.9	2.8	12.3